



with  
**THE COPTHORNE SILVER BAND**  
present their

# GANG SHOW

at  
**The Hawth**  
CRAWLEY

on  
**SATURDAY 19TH NOVEMBER 2005**  
Souvenir Programme £1.50



**Copthorne Golf Club**  
BORERS ARMS ROAD, COPTHORNE,  
WEST SUSSEX RH10 3LL

Clubhouse: 01342 712508/712033  
Club Professional: 01342 712405  
Fax: 01342 717682  
e-mail: [info@copthornegolfclub.co.uk](mailto:info@copthornegolfclub.co.uk)

*Wishing you a  
Successful Gangshow*

**East Grinstead Veterinary Hospital**  
with Branch Surgery

VETERINARY SURGEONS



**THE VETERINARY CLINIC**  
CHURCH ROAD,  
COPTHORNE, SUSSEX

Telephone:- 01342 713957  
Consultations by  
appointments, except for  
emergencies

## HARBOUR HOLDINGS LTD

COMMERCIAL LETTINGS  
at BORERS YARD, COPTHORNE  
and ROWFANT BUSINESS CENTRE

*Immediate availability 1200  
and 1600 sq ft industrial units*

Tel: 01342 712085

**WISHING 'THE GANG'  
EVERY SUCCESS**



### *A Tradition to be Proud of*

We are pleased to welcome you to this our 7<sup>th</sup> Gang Show at the Hawth and we thank you for your continued support since that first show here back in 1991. It doesn't seem possible that 14 years have passed since we took the giant leap from a Village Hall to a real Theatre and we must thank the staff and technicians for making us feel at home and for their patience with 'us amateurs'.

In Scouting and Guiding we aim to provide opportunities for the members to try new activities. For many this will be the first time they have performed in a Theatre, for others it will be the first time on a stage of any description. We hope that it will be an enjoyable experience for performers and audience alike!

We were recently looking through the old scrapbooks and read an article from a 1958 newspaper in which Ron Meyer (friend of Mr Gang Show himself, Ralph Reader) was challenged to try and produce a show with country boys!

1

### *Rainbows*



### *Friends of Guiding with Scout Group Executive*



2

3

Did they really think that Cophorne Scouts wouldn't rise to the challenge? The show was a great success and was the start of the Gang Show tradition for the village. The Guides were welcomed to the crew in 1968 when the first joint show was performed in the Village Hall with the first in a series of pantomimes before returning to Gang Shows in the 80's.

The cast have worked really hard during their 6 weeks rehearsal period and we think they can be proud of what they have achieved. We thank each and every one of them for their enthusiasm, for playing their part in style and for being part of the Cophorne Gang Show tradition.

Enjoy the show!

*Christine & Gwyn*

**DOOMSBUDDY KITCHENS**

Cophorne Bank, Cophorne,  
West Sussex RH10 3QZ  
Fax/Telephone: 01342 712602

We offer a wide range of quality kitchens from the traditional to the modern, including appliances and an excellent fitting service.

We also provide a **FREE** design service with no obligation.



**COPTHORNE**  
PREPARATORY SCHOOL



*"Best wishes to everyone involved with the Gang Show"*

## It's all about Teamwork.....

Organising any event within Guiding and Scouting relies on a good team of volunteers, be it the Leader team at a unit meeting, the Catering team to cook at cub camp or a Jumble sale team to raise much needed funds.

The Gang Show needs Teams within Teams in order to succeed...

The costumes are made with the help of a team of willing parents and friends who manage to conjure up about 500 costumes between them in the run up to the show. As the rehearsal period is so short the sewing machines are whirring away until the very last minute.

The props are always ambitious but the willing team meet a couple of times a week to turn the 'blue prints' into the magnificent sets that we have grown accustomed too! As the show gets closer the team can be seen beavering away at all hours to get everything finished on time.

Scenery painters are a little hard to come by... painting a 40ft canvas is not quite the same as drawing a sketch in a book and this year a new team were put to the test!

In all our Gang Show Team numbers over 250 the biggest Team within the Team is the performers, all 198 of them and the most important of these are the young people. They work hard at learning their lines, getting the steps right and put their heart into their performance.

Add to these the musicians, programme and publicity, ticket office, and front of house helpers all working to one goal.

Only with the confidence that every team will do its very best to complete its task can the show of this size be achieved. Today you will see the result of the efforts of all these teams brought together and we think you will agree that teamwork works.



*'Some of the prop's team'*



*Beavers*



5

*'The Copthorne Silver Band'*



*2nd Guides*



6

## *The Band*

- Band Master* - *Mervyn Tarrant*
- Cornets* - *Mike Golby, Jim Terry,  
Jenni Hails, Ruth Deevoy,  
Howard Feasey, Steve Worsley,  
Jim Dracup, David Hails,  
Stephanie Clayton,  
Brendon Williams,  
Sarah Gillbanks, Clare White*
- Horns* - *Alan Terry, Gwyn Cheesmur,  
Dot Harding, Edd Stop,  
Martin Feasey*
- Baritones* - *Norman Brown, Robert Feasey*
- Euphoniums* - *Bill Woodcock,  
Jason Szczerbicki, Mike Lyons*
- Trombones* - *Clive Wells, Matthew Worsley,  
John Barwell, Peter Swann*
- Basses* - *Ernie Dimsdale, Fred Minns,  
Christopher Ide*
- Percussion* - *Paul Nunn*

7

**Guideline**  
PLANNING  
& DESIGN

Unit 19  
Borers Yard  
Borers Arms Road  
Cophorne  
West Sussex RH10 3LH  
01342 716455

Architectural drawings for planning applications,  
building regulations and  
stage sets!

**GOOD LUCK,  
COPTHORNE SCOUTS & GUIDES**

**GE** GOODMAN  
ELECTRICAL LTD

▶ Industrial ▶ Commercial ▶ Fire Alarms  
▶ Computer Cabling ▶ Design & Installation

MONYMUSK, COPTHORNE BANK,  
COPTHORNE,  
WEST SUSSEX RH10 3JQ  
Tel/Fax: 01342 714334  
Mobile: 07860 284677

◆◆◆ LONDIS

*Best value locally  
Church Road, Cophorne*

*Great Offers Every 3 Weeks  
Magazines and Newspapers  
Credit and Debit Cards Accepted  
Open 7 days a week  
Great Value Groceries*

*" BEST WISHES TO EVERYONE  
INVOLVED WITH THE  
GANG SHOW"*

*Wishing the Scouts and Guides  
a successful Gangshow*

8

## The COPTHORNE SILVER BAND



The Copthorne Silver band was formed in 1902, by Mr Gladman who lived in Crawley. He would travel to Copthorne on Thursday for band practice, stay overnight and travel back on Friday morning. The rest of the band lived in the Copthorne area.

Over a century later - today, the band members come from Crawley, Redhill, Haywards Heath, East Grinstead, even as far as Sevenoaks, and of course the village of Copthorne. The band is very proud of its history especially as it is now the only brass band in the local area. It is hoped that this tradition will be kept alive in the village for years to come.

All the players are amateurs and play in the band in their free time, professionally the band come from all walks of life, ranging from civil servants, office workers, airport workers, students and retired personnel. The age range of the band stretches from nine years to seventy plus, but they all work together to make music for their own enjoyment and to entertain the general public. The skill and dedication of the musicians ensures the continued success of the band, reflected in their willingness and patience in teaching new members to play. New players are always welcome to join the band, we rehearse on a Thursday evening in the Morgan Centre at 7.45 p.m.

The Copthorne Silver Band play a wide range of music, light classics to the latest pop music and of course they also play traditional brass band music. During the year they perform at fetes, garden shows, local bandstands and private functions. If you would like to book the band, please contact the secretary Jim Dracup on 01342 328523 or the bandmaster Mervyn Tarrant on 01239 435987.

## GANG SHOW AT THE HAWTH

### ACT ONE

1. Distinguished Guests.....*Scout and Guide*
2. Breezin' Down Broadway .....*The Gang*
3. Traffic Calming .....*Scouts*
4. Brickies .....*Cubs*  
*Sponsored by Advanced Roofing Services*
5. Guild of Master Craftsmen .....*Beavers*
6. A Woman's Work is Never Done!.....*Rainbows*
7. Happy Ever After.....*Beavers,*  
*Rainbows &*  
*Cubs*
8. We Three Kings.....*Scouts*
9. Russian Interlude.....*Rangers, Guides*  
*& Brownies*
10. Motoring Mutterings.....*Ranger,*  
*Explorer, Scout &*  
*Guide*  
*Sponsored by Rowfant Garage*
11. Noisy, Noisy, Bang, Bang!.....*Cubs*
12. Wheel Get There.....*Rangers*
13. Senior Moment.....*Leader*
14. Ug!.....*Scouts*
15. Swingasaurus'.....*Brownies*



## GANG SHOW AT THE HAWTH

### ACT TWO

1. Strike Up The Band.....*Cophorne Silver Band*
2. My Mum Said.....*Cubs & Guides*  
*By kind permission of Brian Belcher*
3. Brighton, Here We Come.....*Brownies*
4. Seaside Antics.....*Scout Executive & Friends of Guiding*
5. Let's Prom.....*Scout & Guide*
6. Alf Gannet.....*Scout & Guide*
7. Bathing Belles.....*Guides & Scout*
8. At the End of the Pier.....*Guides, Brownies, Scouts, Exec & FoG*  
*By kind permission of Tony Burns*  
*Band arrangement by Steve Worsley*
9. Hold Tight.....*Guides*
10. Scouting Memories.....*Scouts*
11. Step in Time.....*Leaders*
12. Finale.....*The Gang*  
*Including '7 Days Leave' Ralph Reader*

*A bucket collection for Children in Need will be in the foyer as you depart, please give generously.*

11

*2nd Brownies*



*Oak Pack*



12

**Mallory Troop**



**1st Guides**



## ***The Gang***

### **The Beavers**

Jacob Barry, John Bennett, Liam Carse, Ben Chatfield, Robert Creek, Brooke Hales, Jack Lacey, Alex Lynes, Ryan Mitchell, Jamie Osbourne, Ross Price, Kieran Shenton, Sam Tutty, Alfie White and Billy Wraight.

### **The Rainbows**

Isobel Arter, Erin Carse, Olivia Chambers, Gemma Durrant, Harriet Hewitt, Ellie Laflain, Emily Lynes, Fleur Osbourne, Rosie Perry, Jessica Robbins and Leanne Wheatley.

### **The Cubs**

Mitch Appleton, Samuel Arter, Thomas Barry, Pierce Bishop, Owen Brown, Ryan Burke, Alistair Burtenshaw, Samuel Chatfield, Alexander Clark, Grant Forsyth, Liam Grainger, Thomas Hall, Ross Hampton, Daniel Kemp, Matthew Lower, Christopher Luxford, Elliott Muteham, Steven Palmer, Liam Powell, Miles Price, Sean Rouse, Craig Sirr, Nik Trotter, Aaron Vinten, Elliott Westgate and Jamie Wilkinson.

### **The Brownies**

Harley Austin, Bronwyn Baker, Georgia Bew, Madaleine Bishop, Bryony Bland, Kelly Bowring, Isabel Branscombe, Sarah Bristow, Ellie Chambers, Jade Conroy, Rebecca Durrant, Mollie Eddowes, Hollie Edgar, Rebecca Ellis, Lily Evans, Gemma Francis, Lucy Greig, Jessica Grist, Niamh Herrett, Beth Horan, Lauren Iball, Hannah Jones, Charlotte Lacey, Megan Luck, Eve Manning, Katy Mason, Laura Mitchell, Katie Narramore, Georgina Noda-Barnes, Heidi Osborne, Lauren Osborne, Olivia Puddephatt, Hayleigh Robbins, Sally Sirr, Jasmine Stagg, Isla Stone, Mina Summers, Rebecca Taplin, Keira Vinten and Amy Wilkinson.



### **The Scouts**

Connor Bishop, Reece Bishop, Jamie Bland, James Brown, Daniel Bye, Edward Chalk, James Creek, Callum Gibson, Kendall Halliwell, Stephen Hammond, Elliot Hampton, Andrew Herrett, Tim Hewitt, Joe Lower, Peter Luxford, Josh Mitchell, Wil Owens, Jack Powley, James Rowlingson, Thomas Rowlingson, David Sayers, Aaron Stevens, Byron Watson and Oliver Westgate.  
Cont:

### **The Guides**

Daniela Bagatti, Imogen Baker, Jessica Barker, Rebecca Barnes, Amy Bennett, Victoria Bew, Felicite Burke, Kathryn Bye, Katie Carroll, Morgan Carse, Harriet Chalk, Alice Clark, Lydia Clark, Laura Cutting, Philippa Fairburn, Hollie Freeman, Charlotte Grist, Margaret Hunt, Philippa Iball, Lauren Ives, Alexandra Kemp, Natalie Kennett, Sarah Killick-Bird, Sadie Lamb-Bentley, Jasmine London, Nicola Luxford, Ellie Merritt, Anna Montgomery, Josie Narramore, Charlie Noda-Barnes, Holly Palmer, Megan Ringrose, Charlie Roberts, Gemma Rose, Lauren Sims, Josi Trotter, Stephanie Watson, Natasha Watts, Ellie Webb, Shannon Wheatley, Shannon Wickes, Rebecca Wilkinson and Leigh Wraight.

**The Explorers** Matthew Barnes, Jonathan Logan

### **The Rangers**

Claire Bew, Charlotte Burke, Grace Gardner, Sarah Gillbanks, Elizabeth Hammond, Katherine Hammond, Claire Johns, Alison Loving, Catherine Melmoe, Kayleigh Ormanroyd, Clare White, Hannah Witham and Jenny Young.

### **The Leaders, Scout Exec & Friends of Guiding**

Helen Acraman, Robert Bailey, Marion Beal, Jim Blundell, Laura Blundell, Thelma Blundell, Dave Burnage, Kara Bussell, Lenna Carse, Chris Chalk, Harold Cheesmur, Derek Hanks, Jane Jones, Tara Kemple, Angela Kemp, Karen Lelliott, Karen Lloyd, Doug Logan, Sandra Luttmann, Janette McGivern, Debbie Ward, Fiona Watkins, Jo Wickes and Kelly Young.

15

## **Helping Hands.....**

On the Stage during the performance you may notice a few adults, thoroughly enjoying themselves.

Beavers, Rainbows, Cubs, Brownies, Scouts, Guides, Explorers and Rangers and the events they take part in are only possible due to the army of unpaid adult volunteers. The volunteers undertake a wide range of support activities from helping to run units, helping at Fund Raising events, to administration and accounts. Volunteers also get the opportunity to participate in anything the Scouts and Guides are involved in and a few extra activities besides.

Why not volunteer to help your Scouts and Guides and become part of an International Organisation with opportunities to enjoy yourself.

If you would like to find out more about Scouts contact  
Gwyn Cheesmur 01293 881153  
or about Guides contact Lee Bailey on 01342 712526

*Adrian Cruse*  
ESTATE AGENTS

*Village and rural homes on  
the Surrey/Sussex border*

*Tel: 01342 844466*

*Fax: 01342 841641*

*Website: [www.adriancruse.co.uk](http://www.adriancruse.co.uk)*

**COPTHORNE PLAYERS**

**PRESENT THEIR NEW YEAR  
PANTO**

**ROBIN HOOD**

26<sup>th</sup>, 27<sup>th</sup> January 7.30pm  
28<sup>th</sup> January 1.30pm & 6.00pm

**COPTHORNE VILLAGE HALL**

**BOX OFFICE: 01342 717276**

16



## Children In Need 2005

As an outsider, or more correctly perhaps a friend who may lend a little help to the Scouts and Guides, I can look from the outside on what's going on within. It is very heartening to know that after all the hours of hard work that all the Copthorne Scouts and Guides - children and helpers have put into this years Gang Show, that they so cheerfully raise money for another charity, when they spend many hours raising funds for the running costs of their own organisation.

For this years Gang Show, they have again chosen Children In Need as their charity.

Many, many children are helped every year both through organisations and to individuals' each on the merits of their case. The help covers a large spread, supporting helplines and counseling for the abused children, play schemes for children living in deprived areas, the care of the chronically sick and children with special needs.

So a big Thank You to all the happy band of people of people that have spent many evenings and weekends making the Gang Show possible this year. I am confident that it will be great Gang Show and know it will hold many special memories to all those families whose children have taken part.

As you leave the theatre after this show there will be a bucket collection in the foyer as you go out, please give generously.

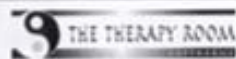
Brian Janes on behalf of BBC Children In Need  
Thanking Copthorne Scouts and Guides for their Support

## Did you know.....

The BBC Children in Need Appeal is the most important single event in the BBC calendar and the only occasion when the whole of the BBC joins together in support of a single project on TV, radio and online.  
The BBC's first broadcast appeal for children took place in 1927, in the form of a five-minute radio broadcast on Christmas Day.

Last year, thanks to extensive fundraising and generous donations BBC Children in Need raised more than £34 million!  
Every single penny donated finds its way to a charity or project that works to improve the lives of children and young people throughout the UK. None of the money is used for other costs, such as advertising, paper, postage or the salaries of people working for BBC Children in Need.

Pudsey Bear first appeared on the scene in 1985. He was created by designer Joanna Ball and named after her home town of Pudsey in Yorkshire. Now he's the BBC Children in Need's mascot and official logo, as well as a registered trademark.



- \*Swedish Massage
- \*Aromatherapy
- \*Holistic Facials
- \*Remedial Massage
- \*Indian Head Massage
- \*Reflexology



Treatments for Ladies and Gents at affordable prices!  
Christmas gift vouchers available

Tel: 01342 712874

## Gang Show 2005

*On DVD or Video*  
**Return the enclosed order form**  
*by*  
**30th November 2005**  
*for your*  
**pre Christmas delivery**  
**Videos £12.00 each**  
**DVDs £15.00 each**

1st Brownies



Ash Pack



## Plasma LCD Home Cinema Specialists

**Panasonic**  
**VIERA** HD ready



37" Plasma TV **Now £1995**

## HIGH DEFINITION TV

See High Definition Demo Instore Today



**SONY**  
40" LCD TV  
HD Ready  
New £1849

**HD**  
ready

**JVC**  
32" LCD TV  
HD Ready  
New £1199



**BRAVIA**

50" LCD  
Rear  
Projection  
New £1399



Free Sony TV Stand

See the full range of New HD Ready TV's  
Free Home Delivery & Setup  
Free Home Site Survey  
*Visit the Experts*

**Pioneer**

43" Plasma TV  
HD Ready  
New £2495

[www.avensys.co.uk](http://www.avensys.co.uk)

PLASMA LCD PROJECTORS HOME CINEMA HD TV DVD PLAYERS  
AV

FREE  
DELIVERY

**SHARP**

37" LCD TV  
HD Ready  
New £1999

**avensys**  
Home of Sound & Vision

Family Entertainment Rooms  
Media Centres, Specialist  
Free Parking  
24 Finance Available

24hr Delivery Available  
Training & Support  
All Major Credit Cards Accepted  
Full Installation Service





## ACKNOWLEDGEMENTS

**Produced and Directed by Gwyn and Christine Cheesmur**

**Script**..... **Gwyn and Christine Cheesmur**  
*With contributions from Jim Blundell and Alan Terry*

**Choreography**.....**Christine Cheesmur**  
*With contributions from Grace Gardner, Hannah Witham and the Rangers*

**Box Office/Show Treasurer**.....**Alan Clemits**

**Front of House Manager**.....**Paul Clark**

**Backstage Gaffer** .....**Sandra Luttmann**  
*Assisted by Chris Bushell*

**Wardrobe Manager**.....**Thelma Blundell**  
*Assisted by Laura Blundell*

**Costume Making Team:** *Jannette Burke, Lenna Carse, Chris Chalk, Jill Creek, Anne Hammond, Tara Kemble, Jane Jones, Gail Melmoe, Sheena Osbourne, Maureen Sandys, Jeni Webb, Alison Westgate, Catherine White, Jo Wickes.*

**Make Up**.....**Jenny Cheesmur**  
*Assisted by Owen & Esther Cheesmur & Alison Merrick*

**Bandmaster**.....**Mervyn Tarrant**

**Pianist**.....**Sue Messinger**

**Props Building Team:** *Helen Acraman, Martyn Baker, Matthew Barnes, Jeff Bishop, Jim Blundell, Martin, Lyn, Georgina & Chris Brightwell, Andy Carse, Louise Gardner, Janice & Alison Gillbanks, Mark & Stephen Hammond, Karen, Alan & Trevor Lelliott, Brian Janes, Lynda Matthews, Keith Rixon, Richard Slater, Alex Soghmanians, Maureen Witham.*

**Scenery**.....**Zoe Green, Tryan Wallace**

**Prompt**.....**Judy Soghmanians**

**Transport**.....**Michael Harbour**

**Photographs**.....**Linda Hawkins**

**PR & Advertising**.....**Lee Bailey**

**Video/DVD Production**.....**Penny Farthing**

Special thanks to Advanced Roofing, Copthorne Players, Goodman Electrical, Greenham Trading, Guideline Building Services, Harbour Holdings Ltd, Icemaster, Lingfield Park Racecourse, Michael Harbour Haulage, Rowfant Garage and Thistle Printers for their contributions.

*We would also like to thank all the Scout & Guide Leaders, parents and friends for their valued support.*

## C.J's Hairdressing

Wishes the Copthorne  
Gangshow 2005 every  
success

Call in today for a  
free consultation  
and find out more.



Church Eoad  
Copthorne  
West Sussex  
EH1 3EE  
Tel: 01342 717322

Available at  
**DRAGONS HEALTH CLUB**  
Near Copthorne Hotel

Beauty

by  
**Emma**

Facials, manicures, pedicures,  
waxing, airbrush tanning,  
massage, gel nails,  
spa days,  
and more - day and late evening  
appointments available.  
**PHONE DRAGONS:**  
01342 715022

## KWIK MART

6 Copthorne Bank  
Copthorne  
West Sussex RH10 3QX

Supplying Groceries  
Delivering Newspapers

and Opening on the 3rd December



Serving the community

Good Luck to the Scout and Guide  
Gangshow 2005



## Flowers & Such

*Fresh Flowers Fresh Ideas*

For flowers with that "WOW" Factor

Call us today on Tel: 01342 718959

Or pop into the shop along  
Copthorne Bank, Copthorne



[www.flowersandsuch.co.uk](http://www.flowersandsuch.co.uk)

23

Scott Troop



Rangers



24

## STOP PRESS

### Gang Show Photographs

Photography is not allowed during performances at the Hawth. Arrangements have been made for photographs to be taken during the dress rehearsal Friday evening. These will be for sale at

Scout Centre, Borers Arms Road  
Sunday 20<sup>th</sup> & Monday 21<sup>st</sup> November  
11.00 a.m. to 5.00 p.m.

Guide HQ at the very end of Bramble Close  
Saturday 26<sup>th</sup> & Sunday 27<sup>th</sup> November  
10.00 a.m. to 4.00 p.m.

### Copthorne Scouts & Guides Forthcoming Events

#### Christmas Post

Special Scout & Guide Stamps will be available in  
Copthorne Village Shops.  
Deliveries in Copthorne only during December.

#### Father Christmas Float

will be touring the village on  
17<sup>th</sup> & 18<sup>th</sup> December.



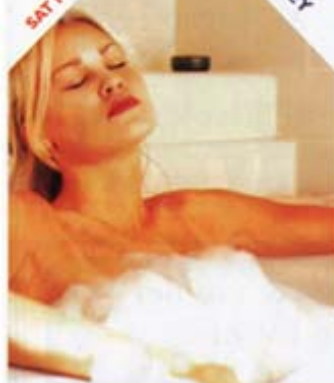
# RELAX

Your **MOT** & Service  
problems solved!



OPEN  
MON-FRI  
8.30-6.00  
SAT MORNINGS

NEW  
TO  
CRAWLEY



- \* **MOTWHILE U WAIT** (by appointment)
- \* **FREE** re-test if required (within 7 days)
- \* Collection, delivery or courtesy car **FREE** subject to availability
- \* Servicing of **ALL** makes
- \* **ONLY** Ford specialist in Crawley
- \* Service prices from **£99** incl parts, labour & vat
- \* All work pre-estimated & **GUARANTEED** (references available)
- \* Comfortable lounge with **FREE** refreshments & TV for waiting customers
- \* **AIR CONDITIONING** specialist from £65 plus VAT
- \* **FORD KEYS** cut specialist



Copthorne Road,  
Pound Hill,  
Crawley, West Sussex  
RH10 3PD  
Next to Texaco Station

Phone Mandy for a  
booking or  
estimate on

**01293 888333**



From the A21, leave at  
J10 heading east toward E.Ground.  
At 1st roundabout take last exit and follow  
the A2128 towards Crawley.  
We are situated by a petrol station.